

502
TY-1
I 2:403
e=0.30

501
KTY-1
II
e=0.30

508
T
I
e=0.30

VUONELONTIE

URAKANTIE

KYLVÄONTIE

EV

e=0.30

8232 e=0.30

2:324

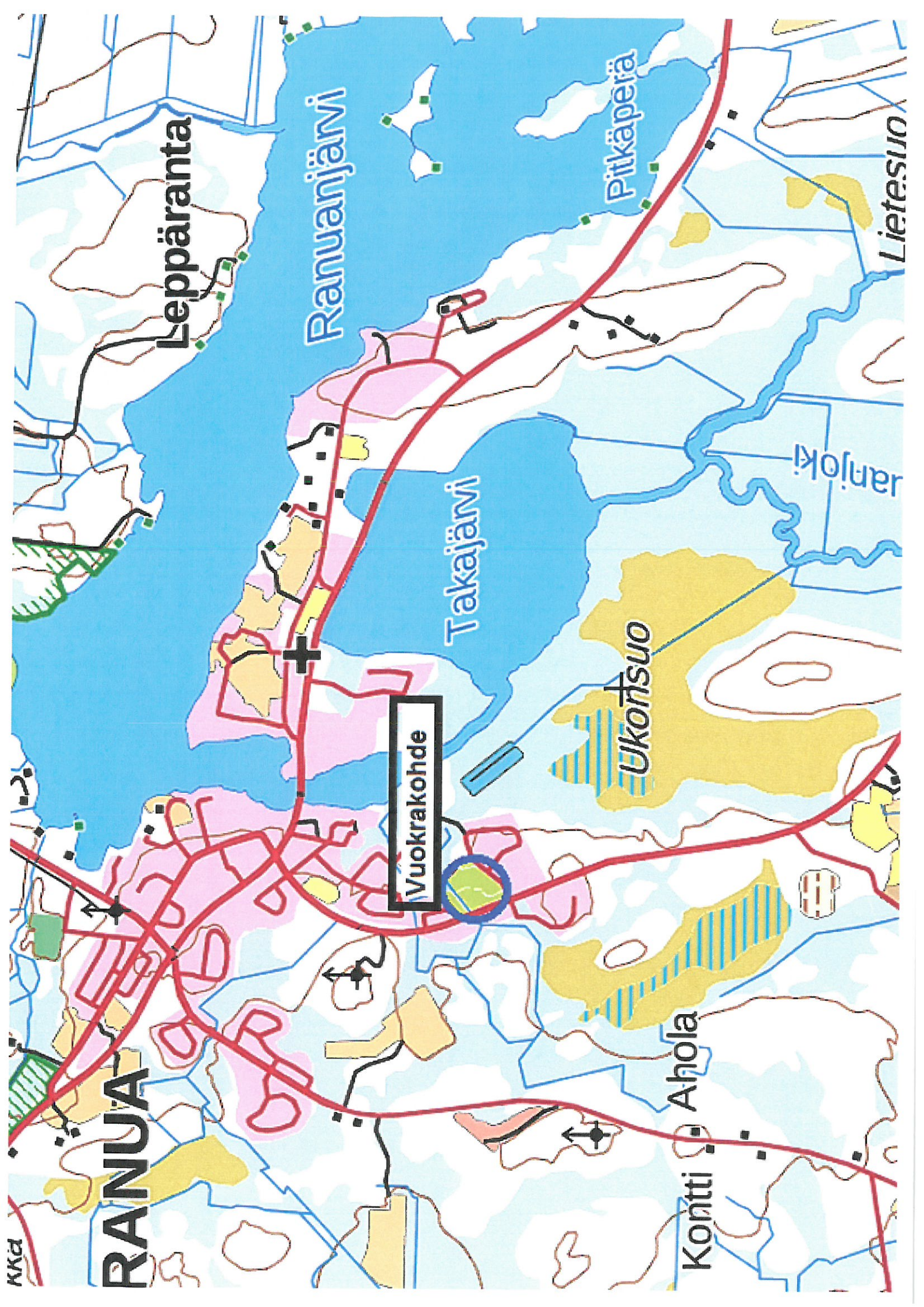
2:424

2:426

304913

2:425

1:83



RANUA

Leppäranta

Ranuanjärvi

Takajärvi

Pitkäperä

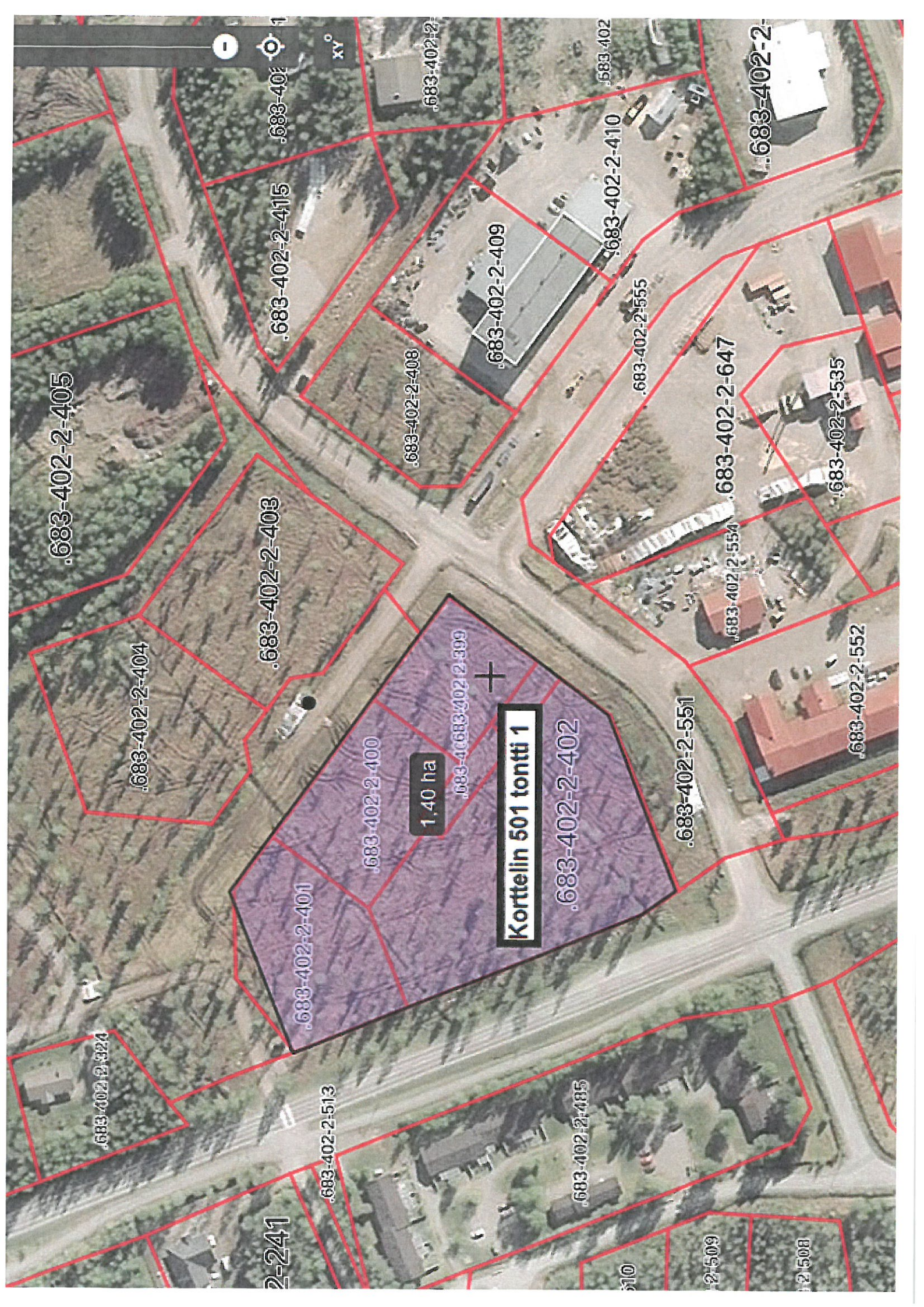
Ukonsuo

Kontti Ahola

Vuokrakohte

Lietesuo

anjoki



.683-402-2-405

.683-402-2-404

.683-402-2-403

.683-402-2-401

.683-402-2-400

.683-402-2-408

.683-402-2-409

.683-402-2-410

.683-402-2-555

.683-402-2-647

.683-402-2-535

.683-402-2-552

.683-402-2-551

1,40 ha

Korttelin 501 tonntti 1

.683-402-2-402

.683-402-2-399

.683-402-2-513

.683-402-2-485

.683-402-2-524

.683-402-2-509

.683-402-2-508

2-241

2-10

